



POLYMAR[®] traffic

HIGH-VALUE TARPAULINS FOR
TRUCKS, TRANSPORT COVERINGS AND MORE

Innovative · Versatile · Practically proven

Achtung!

Aufgrund der Reproduktion ist die Farbdarstellung nicht verbindlich und kann je nach Browser und Bildschirm vom Original abweichen.

Attention!

By reason of reproduction colour display is not bindingly and can differ to original due to browser and monitor.



Innovative Versatile Practically proven

Hochwertige Planen für Lkw,
Transportabdeckungen und
vieles mehr ...

High-value tarpaulins for trucks,
transport coverings and more ...

Toiles de qualité pour camions,
bâches de protection pour le
transport et autres applications ...

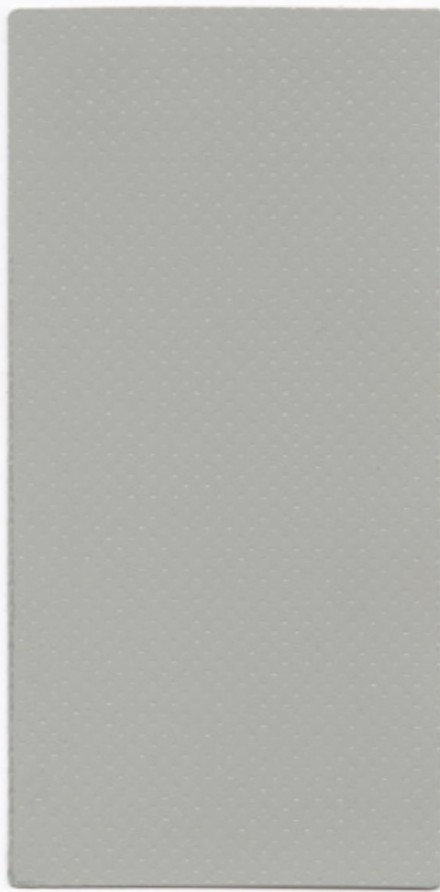
Teli di alta qualità per camion,
coperture per mezzi di trasporto
e molto di più ...

Lonas de PVC de calidad superior
para camiones, cubiertas de
transporte y mucho más ...

Высококачественные тенты для
грузовых автомобилей, полога и
многое другое



POLYMAR® HOCHGLANZ 8210



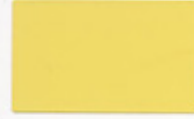
907 weiß RAL 9010
150, 218, 250, 300, 320 cm
59.06", 85.83", 98.43", 118.11", 125.98"



142 creme
300 cm
118.11"



123 beige
250 cm
98.43" RAL 1014



168 zinkgelb
250 cm
98.43"



119 brillantgelb
250, 300 cm
98.43", 118.11"



148 goldgelb
300 cm
118.11" RAL 1003



244 reinorange
250 cm
98.43" RAL 2004



370 karminrot
250, 300 cm
98.43", 118.11" RAL 3002



581 himmelblau
250 cm
98.43" RAL 5015



543 königsblau
218, 250, 300 cm
85.83", 98.43", 118.11"



537 enzyanblau
250 cm
98.43" RAL 5010



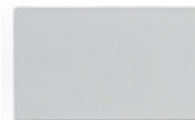
566 kobaltblau
250 cm
98.43" RAL 5013



636 hollandgrün RAL 6026
218, 250, 300 cm **NEW**
85.83", 98.43", 118.11"



682 russischgrün
250 cm
98.43" RAL 6028



729 lichtgrau
250 cm
98.43" RAL 7035



705 hellgrau
218, 250, 300 cm
85.83", 98.43", 118.11"



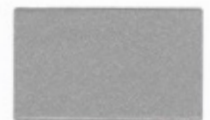
712 steingrau
250 cm
98.43"



763 alugrau
250 cm
98.43" RAL 7037

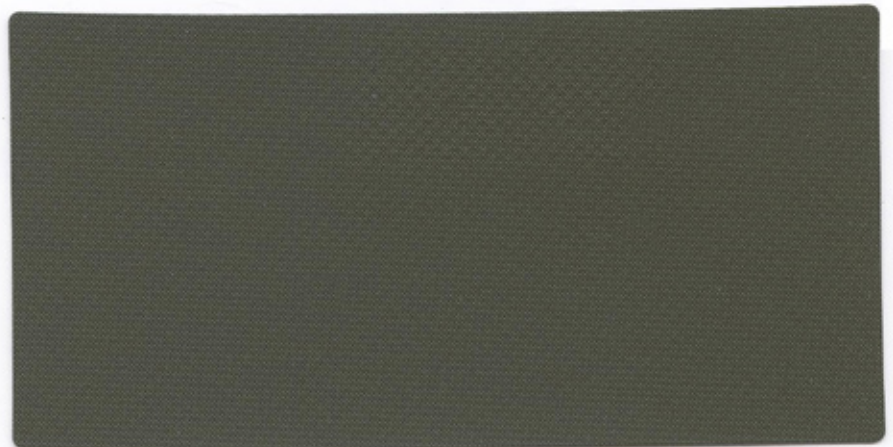


905 schwarz
250, 300 cm
98.43", 118.11" **NEW** RAL 9005



911 silber
250 cm
98.43" RAL 9006

POLYMAR® BW-TL 8305-0253 8551



691 N bronze grün
150, 250 cm
59.06", 98.43" RAL 6031

POLYMAR® HOCHGLANZ 8205



008 transparent
250 cm
98.43"



907*** weiß RAL 9010
150, 180, 204, 218, 238, 250,
275, 279, 300, 320 cm



916 verkehrsweiß
300 cm
118.11" **NEW COLOR**



141 perlweiß
250 cm
98.43" RAL 1013



143 hellelfenbein
250 cm
98.43" RAL 1015



123 beige
250 cm
98.43" RAL 1014



170 warsteiner*
250 cm
98.43"



168 zinkgelb
250 cm
98.43"



101 kosmosgelb RAL 1021
218, 250, 300 cm **NEW**
85.83", 98.43", 118.11"



107 ginstergelb
250 cm
98.43" RAL 1032



119 brillantgelb
250 cm
98.43"



148 goldgelb RAL 1003
218, 250, 275, 300 cm **NEW**
85.83", 98.43", 108.27", 118.11"



175 chromgelb
250 cm
98.43" RAL 1028



137 narzissengelb
250 cm
98.43" RAL 1007



206 tieforange
250 cm
98.43" RAL 2011



221 orange
218, 250 cm
85.83", 98.43" RAL 2008



244 reinorange
250, 300 cm
98.43", 118.11" **NEW**
RAL 2004



290 amerikarot
250 cm
98.43" RAL 3020



340 coca cola**
250 cm
98.43" Rot 2000



356 rot
250, 300 cm
98.43", 118.11" RAL 3000



370 karminrot RAL 3002
218, 250, 275, 300 cm **NEW**
85.83", 98.43", 108.27", 118.11"



311 beaujolais
250 cm
98.43"



323 viola
250 cm
98.43" Pantone 273 C



549 lichtblau
218, 250 cm
85.83", 98.43" RAL 5012

* Mit offizieller Genehmigung der:
Officially approved by:
Avec l'autorisation officielle de:
Con la autorización oficial de:
Con l'approvazione ufficiale di:
**Warsteiner Brauerei,
Haus Cramer GmbH & Co. KG**

** Mit offizieller Genehmigung der:
Officially approved by:
Avec l'autorisation officielle de:
Con la autorización oficial de:
Con l'approvazione ufficiale di:
Coca Cola GmbH



583 wasserblau
250 cm
98.43"



543 königsblau
218, 250, 300 cm
85.83", 98.43", 118.11"



572 blau
250 cm
98.43"



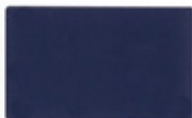
537 enzianblau RAL 5010
218, 250, 275 cm
85.83", 98.43", 108.27"



557 ultrablau
218, 250 cm
85.83", 98.43"



544 ultramarin
250, 275 cm
98.43", 108.27" RAL 5002



566 kobaltblau RAL 5013
218, 250, 275, 300 cm **NEW**
85.83", 98.43", 108.27", 118.11"



590 tiefblau
250 cm
98.43"



619 gelbgrün
250 cm
98.43" RAL 6018



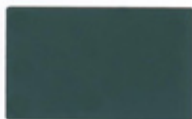
602 brillantgrün
250 cm
98.43" RAL 6024



663 smaragdgrün
218, 250 cm
85.83", 98.43" RAL 6001



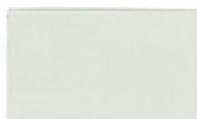
636 hollandgrün RAL 6026
218, 250, 275 cm
85.83", 98.43", 108.27"



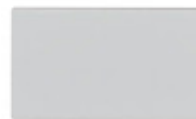
682 russischgrün
250 cm
98.43" RAL 6028



679 moosgrün
250 cm
98.43" RAL 6005



746 grauweiß
250 cm
98.43" RAL 9002



729 lichtgrau RAL 7035
218, 250, 275, 300 cm **NEW**
85.83", 98.43", 108.27", 118.11"



717 blassgrau
250, 275 cm
98.43", 108.27"



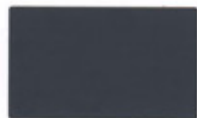
705 hellgrau
218, 250 cm
85.83", 98.43"



788 staubgrau
250 cm
98.43"



763 alugrau
218, 250 cm
85.83", 98.43" RAL 7037



782 anthrazit
250 cm
98.43" RAL 7016



830 schoko
250 cm
98.43" RAL 8017



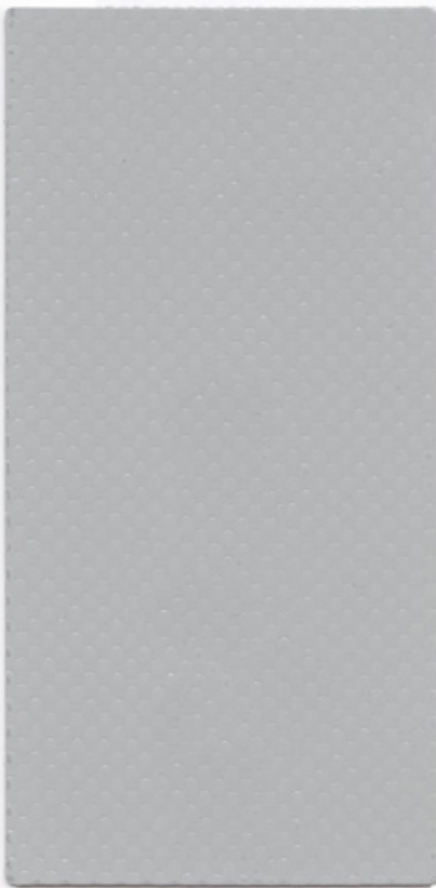
905 schwarz RAL 9005
218, 250, 275, 300 cm
85.83", 98.43", 108.27", 118.11"



911 silber RAL 9006
218, 250, 275, 300 cm
85.83", 98.43", 108.27", 118.11"

***907 weiß RAL 9010
59.06", 70.87", 80.31", 85.83", 93.70", 98.43", 108.27", 109.84", 118.11", 125.98"

POLYMAR® HOCHGLANZ 8556



907 weiß RAL 9010
250, 300, 320 cm
98.43", 118.11", 125.98"



916 verkehrsweiß RAL 9016
300 cm
118.11" **NEW COLOR**



141 perweiß RAL 1013
300 cm
118.11"



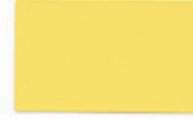
143 hellelfenbein RAL 1015
300 cm
118.11"



123 beige RAL 1014
300 cm
118.11"



127 gelb RAL 1018
300 cm
118.11"



168 zinkgelb
300 cm
118.11"



101 kosmosgelb RAL 1021
300 cm
118.11"



107 ginstergelb RAL 1032
300 cm
118.11"



119 brillantgelb
300 cm
118.11"



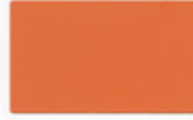
148 goldgelb RAL 1003
300 cm
118.11"



175 chromgelb RAL 1028
300 cm
118.11"



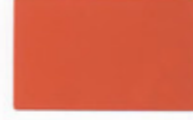
137 narzissengelb RAL 1007
300 cm
118.11"



221 orange RAL 2008
300 cm
118.11"



244 reinorange RAL 2004
300 cm
118.11"



205 internationalorange
300 cm
118.11"



290 amerikarot RAL 3020
300 cm
118.11"



340 coca cola** Rot 2000
300 cm
118.11"



356 rot RAL 3000
300, 320 cm
118.11", 125.98" **NEW**



370 karminrot RAL 3002
300 cm
118.11"



357 rouge
300 cm
118.11"



371 burgund
300 cm
118.11"



571 eisblau
300 cm
118.11"



549 lichtblau RAL 5012
300 cm
118.11"



586 lagune
300 cm
118.11"



543 königsblau
300 cm
118.11"



537 enzianblau RAL 5010
300, 320 cm
118.11", 125.98" **NEW**



520 mittelblau
300 cm
118.11"



557 ultrablau
300, 320 cm
118.11", 125.98" **NEW**



544 ultramarin RAL 5002
300 cm
118.11"



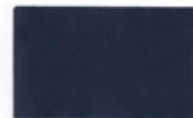
541 dunkelblau
300, 320 cm
118.11", 125.98" **NEW**



552 saphirblau RAL 5003
300 cm
118.11"



566 kobaltblau RAL 5013
300 cm
118.11"



597 nachtblau RAL 5011
300 cm
118.11"



619 gelbgrün RAL 6018
300 cm
118.11"



662 farngrün
300 cm
118.11"



663 smaragdgrün RAL 6001
300 cm
118.11"



602 brillantgrün RAL 6024
300 cm
118.11"



634 türkisgrün
300 cm
118.11"



636 hollandgrün RAL 6026
300 cm
118.11"



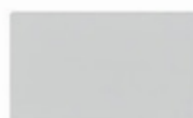
623 tanne
300 cm
118.11"



679 moosgrün RAL 6005
300 cm
118.11"



746 grauweiß RAL 9002
300 cm
118.11"



729 lichtgrau RAL 7035
300 cm
118.11"



717 blassgrau
300 cm
118.11"



705 hellgrau
300 cm
118.11"



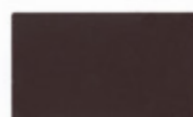
711 verkehrsgrau RAL 7042
300 cm
118.11"



788 staubgrau
300 cm
118.11"



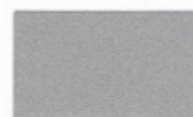
763 alugrau RAL 7037
300 cm
118.11"



830 schoko RAL 8017
300 cm
118.11"



905 schwarz RAL 9005
300 cm
118.11"



911 silber
300, 320 cm
118.11", 125.98"

POLYMAR®

Gesamtgewicht

Total weight, Poids total
Peso total, Peso totale
Gramatura całkowita, Общий вес

Reißkraft

Tensile strength
Résistance rupture
Resistencia rotura
Resistenza alla trazione
Odporność na zerwanie
Прочность на растяжение

Kette/Schub

warp/weft
chaîne/trame
cadena/trama
ordito/trama
osnowa/wątek
основа/уток

Weiterreißfestigkeit

Tear strength
Résistance déchirure
Resistencia al desgarro
Resistenza alla lacerazione
Odporność na rozdarcie
Прочность на разрыв

Kette/Schub

warp/weft
chaîne/trame
cadena/trama
ordito/trama
osnowa/wątek
основа/уток

Haftfestigkeit

Adhesion, Adhérence
Adherencia, Adesione
Adhezja
Адгезия

Temperaturbeständigkeit

Temperature resistance
Températures maximales d'utilisation
Resistencia a la temperatura
Resistenza alla temperatura
Odporność na temperatury
Температурный режим

Brennverhalten

Fire behaviour
Réaction au feu
Comportamiento a la llama
Comportamento alla fiamma
Ogniodporność
Возгораемость

POLYMAR® FR

Schwerentflammbar

Passes firetest
Réaction au feu
Ignifugo segun norma
Ignifugo secondo
Certyfikaty ogniodporności
Огнестойкость

Bei den angegebenen technischen Daten handelt es sich um Durchschnittswerte. Geringfügige Farbschwankungen vorbehalten. RAL-Farben in Anlehnung. Stets Gültigkeit der FR-Zulassung prüfen. Alle Produkte von Mehler Technologies entsprechen der EU-Verordnung REACH - Registration, Evaluation, Authorisation of Chemicals. Die Herstellung unserer technischen Textilien ist nach DIN EN ISO 9001 : 2008 zertifiziert. Weitere Varianten auf Anfrage, Programmänderungen vorbehalten.

The indicated technical specifications are average values. Colours are subject to slight variations. References made to RAL are indications only. Always check the validity of fire certificate. All products of Mehler Technologies are in accordance with the European REACH directive - Registration, Evaluation and Authorisation of Chemicals. Manufactured in Germany under the internationally recognized standard of quality DIN EN ISO 9001 : 2008. Other versions upon request, program changes reserved.

8210

650 g/m²

DIN EN ISO 2286-2
19.1 oz./sq.yd.
ASTM D-751.10

2500/2500

N/50 mm
DIN EN ISO 1421/V1
320 / 300 lbs. / in.
ASTM D-751
Procedure B

250/250 N

DIN 53363
35 / 35 lbs.
ASTM D-751
(8" x 10") Specimen

100 N/5 cm

PA 09.03 (intern)
11 lbs. / in.
ASTM D-751
RF Weld

-40 °C / +70 °C

DIN EN 1876-1
PA 07.04 (intern)
-40 °F / +158 °F
ASTM D-2136
PA 07.04 (intern)

ISO 3795

<100 mm/min.

8212

BS 7837

California T 19
D.M. 26.06.84 (UNI 9177): CL. 2
DIN 4102: B1
NFP 92507: M2
EN 13501-1: B-s2-d0
GOST: G1

8205

680 g/m²

DIN EN ISO 2286-2
20 oz./sq.yd.
ASTM D-751.10

3000/3000

N/50 mm
DIN EN ISO 1421/V1
320 / 310 lbs. / in.
ASTM D-751
Procedure B

300/300 N

DIN 53363
50 / 50 lbs.
ASTM D-751
(8" x 10") Specimen

100 N/5 cm

PA 09.03 (intern)
11 lbs. / in.
ASTM D-751
RF Weld

-40 °C / +70 °C

DIN EN 1876-1
PA 07.04 (intern)
-40 °F / +158 °F
ASTM D-2136
PA 07.04 (intern)

ISO 3795

<100 mm/min.

8509

BS 7837

D.M. 26.06.84 (UNI 9177): CL. 2
DIN 4102: B1
NFP 92507: M2
EN 13501-1: B-s2-d0
GOST: G1

8556

900 g/m²

DIN EN ISO 2286-2
26.5 oz./sq.yd.
ASTM D-751.10

4300/4000

N/50 mm
DIN EN ISO 1421/V1
430 / 400 lbs. / in.
ASTM D-751
Procedure B

500/500 N

DIN 53363
70 / 90 lbs.
ASTM D-751
(8" x 10") Specimen

100 N/5 cm

PA 09.03 (intern)
11 lbs. / in.
ASTM D-751
RF Weld

-40 °C / +70 °C

DIN EN 1876-1
PA 07.04 (intern)
-40 °F / +158 °F
ASTM D-2136
PA 07.04 (intern)

ISO 3795

<100 mm/min.

8540

BS 7837

D.M. 26.06.84 (UNI 9177): CL. 2
DIN 4102: B1
NFP 92507: M2
EN 13501-1: B-s3-d0
GOST: G1
ÖNorm: B1

8551

700 g/m²

DIN EN ISO 2286-2
20.3 oz./sq.yd.
ASTM D-751.10

>2800

N/50 mm
DIN EN ISO 1421/V1
320 / 310 lbs. / in.
ASTM D-751
Procedure B

>250/>250 N

DIN 53363
70 / 70 lbs.
ASTM D-751
(8" x 10") Specimen

100 N/5 cm

PA 09.03 (intern)
11 lbs. / in.
ASTM D-751
RF Weld

-40 °C / +80 °C

DIN 53361
PA 07.04 (intern)
-40 °F / +176 °F
ASTM D-2136
PA 07.04 (intern)

Nachbrennzeit < 2sec

burning time after flame stop <2 sec
Durée d'inflammation après extinction de la flamme <2 sec
Tiempo de combustión posterior <2 seg.
Tempo di postcombustione <2 sec
Czas spalania po ustaniu płomienia <2 sekundy
время горения после пламени <2 секунд
DIN EN ISO 6941

Les données techniques indiquées sont des valeurs moyennes. Sous réserve de légers changements de coloris. Coloris approchant RAL. Veuillez toujours vérifier la validité des certificats anti-feu. Nos produits sont conformes à la réglementation Européenne REACH - enregistrement, évaluation et autorisation des substances chimiques. Toutes nos fabrications sont européennes selon les standards de qualité internationaux DIN EN ISO 9001 : 2008. Autres versions sur demande, sous réserve de modifications de la gamme.

I dati tecnici sono la risultanza di valori medi di produzione. Sono possibili leggere variazioni di colore. I colori sono prodotti in rispondenza alla scala RAL. Verificare sempre la validità delle certificazioni. Tutti i prodotti Mehler Technologies rispondono alla normativa REACH - Registration, Evaluation, Authorisation of Chemicals. La produzione dei nostri tessuti è certificata secondo DIN EN ISO 9001 : 2008. Su richiesta, si possono produrre altre versioni. Modifiche della gamma sempre possibili.

Características técnicas indicadas en valores medios. Sujetas a pequeñas alteraciones del color. Referencias al RAL son solo indicativas. Siempre verificar la validez del certificado de ignición. Todos los productos de Mehler Technologies cumplen la normativa REACH - Registration, Evaluation, Authorisation of Chemicals (Registro, Evaluación y Autorización de Sustancias Químicas). La fabricación de nuestros productos esta certificada según la DIN EN ISO 9001 : 2008. Otras variantes bajo consulta. Posibles modificaciones sin previo aviso.

Все указанные технические данные базируются на основе выявленных средних показателей. Цвета приближены к RAL. Незначительные цветовые отклонения возможны. Все продукты Mehler Technologies соответствуют ЕС директиве «REACH» - Registration, Evaluation, Authorisation of Chemicals. Проверьте срок действия сертификата пожарной безопасности. Произведено и сертифицировано в Германии согласно нормативам стандартов качества DIN EN ISO 9001 : 2008. Другие варианты по запросу. Возможны изменения в программе.

8205 + 8509: entspricht
selon la norme
corrisponde a

(DIN) EN 12641-1 / complies with
(DIN) EN 12641-1 / corresponde a
(DIN) EN 12641-1 / Соответствует

(DIN) EN 12641-1
(DIN) EN 12641-1
(DIN) EN 12641-1

POLYMAR® ist recycelbar.
POLYMAR® is recyclable.
POLYMAR® est recyclable.

8556 + 8540: entspricht
selon la norme
corrisponde a

(DIN) EN 12641-2 / complies with
(DIN) EN 12641-2 / corresponde a
(DIN) EN 12641-2 / Соответствует

(DIN) EN 12641-2
(DIN) EN 12641-2
(DIN) EN 12641-2

POLYMAR® es reciclable.
POLYMAR® è riciclabile.
POLYMAR® рециркулируется.



Sales companies and Sales offices

France / Mehler Technologies SARL
Bât. A1, 3 chemin des Cytises
F-69340 Francheville
info.fr@mehgies.com

U.K. / Mehler Technologies Ltd.
Unit 1.7, Hollinwood Business Centre
Albert Street, Oldham,
Lancs. OL8 3QL
info.uk@mehgies.com

Italy / Mehler Technologies S.R.L.
Via Enrico Fermi 52
I-20019 Settimo Milanese
info.it@mehgies.com

Poland / Mehler Technologies Sp. z o.o.
ul. Mikołajczyka 31a
PL-41-200 Sosnowiec
info.pl@mehgies.com

Latvia / Mehler Technologies SIA
Liepājas iela 3d
Rīga, LV-1002
info@mehler-technologies.lv

Romania / SC Mehler Technologies S.R.L.
Str. Linia de Centura Nr.2, D2
RO-077175 Stefanesti de Jos
(Judetul Ilfov)
office@mehler-technologies.ro

Turkey / Mehler Technologies Ltd. Şti.
Başakşehir San. Sit.
A Blok No: 22, Başakşehir
TR- Istanbul
info.tr@mehgies.com

U.S.A / Mehler Technologies, Inc.
220 B Cabell Street
Martinsville, VA 24112
lvia@mehlertex.com

United Arab Emirates / Mehler Technologies Middle East
General Trading LLC
Sheikh Zayed Road
Sidra Tower, Office No: 1007
Dubai-UAE
info.uae@mehgies.com

India / Mehler Technologies India Pvt. Ltd.
605, Vikrant Tower, 4, Rajendra Place,
New Delhi - 110008 India
info@mehler.in

Malaysia / Mehler Technologies South East Asia
Suite 20-01 & 20-02B, Level 20,
The Pinnacle
Persiaran Lagoon Bandar Sunway
Subang Jaya, 47500 Malaysia
k.ahmed@mehler-technologies.com

Russia / Mehler Technologies Russia
Sadovnicheskaya embankment 79
115035 Moscow
russia@mehler-technologies.com

Brazil / Mehler Technologies Brazil
Av. Paulista, 1079 – 8º andar – sala 818
Cerqueira Cesar - São Paulo
SP - Brazil, CEP 01311-020
info-br@mehler-technologies.com

Australia / Indtex Australia Pty Ltd.
PO Box 7243, Beaumaris
Melbourne VIC 3193
info-au@mehler-technologies.com

China / Eusource International
Guangzhou Office
R.806 Goayage, Tianyu Garden
152 Linhe Zhong Road
Guangzhou 510610
brigittehuang@googlemail.com

Manufacturing and sales

Mehler Technologies GmbH
Rheinstrasse 11
D-41836 Hückelhoven
info.de@mehgies.com

Mehler Technologies GmbH
Edelzeller Strasse 44
D-36043 Fulda
info.de@mehgies.com

Mehler Technologies s.r.o.
Karla Čapka 1085
CZ-512 51 Lomnice nad Popelkou
info.cz@mehgies.cz